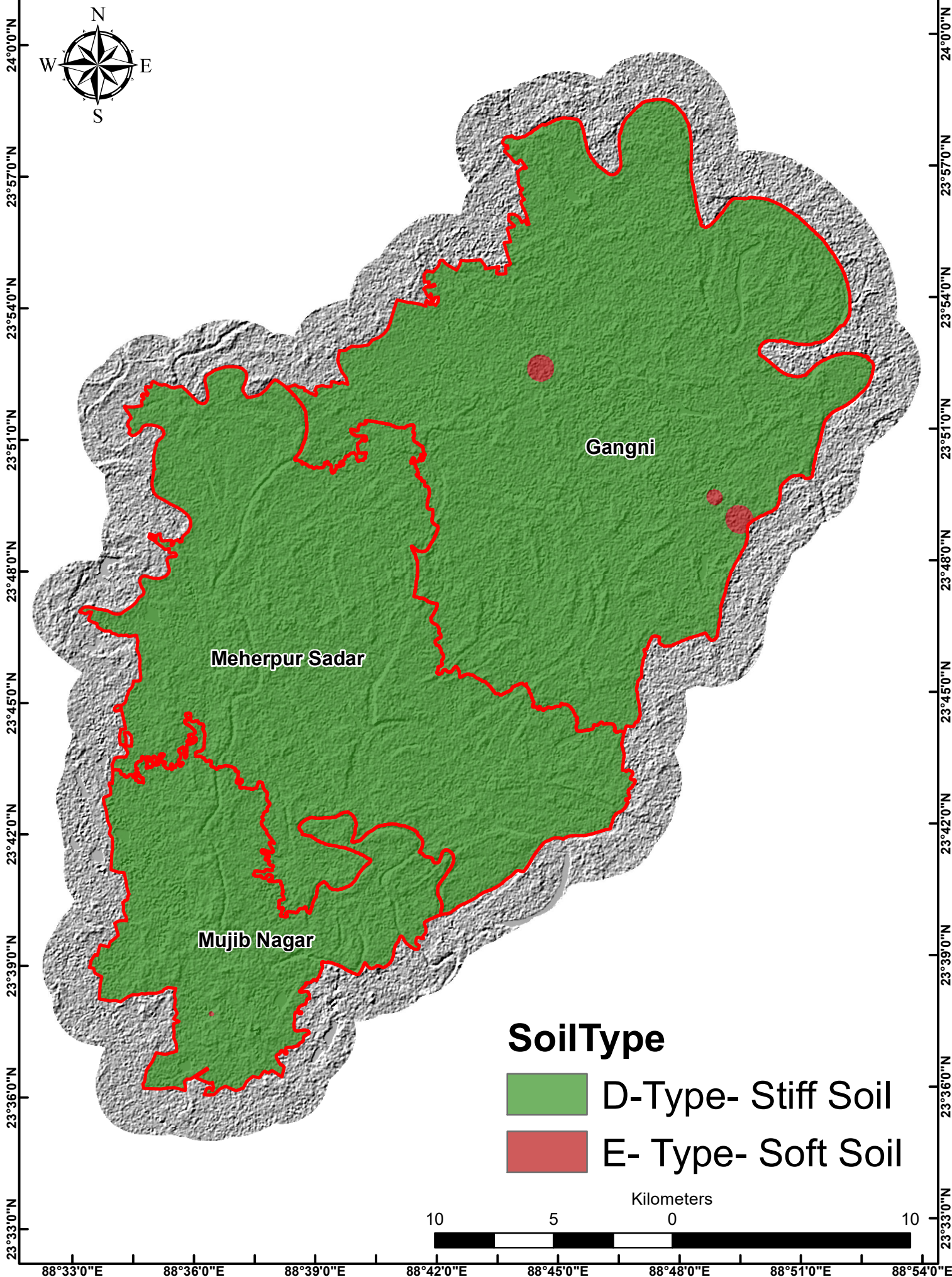


88°33'0"E 88°36'0"E 88°39'0"E 88°42'0"E 88°45'0"E 88°48'0"E 88°51'0"E 88°54'0"E

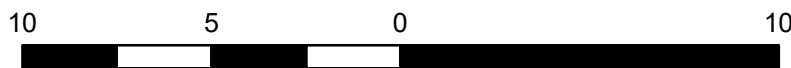
Soil Type of Meherpur Zila



SoilType

- D-Type- Stiff Soil
- E- Type- Soft Soil

Kilometers



88°33'0"E 88°36'0"E 88°39'0"E 88°42'0"E 88°45'0"E 88°48'0"E 88°51'0"E 88°54'0"E